



2017-2018

# **FOUNDATION SERIES**

[WWW.RATTLESTICK.CA](http://WWW.RATTLESTICK.CA)



## **HANDCRAFTED SHAVING TOOLS AND ACCESSORIES FOR THE UN-TAMED MAN**

For those men who are worldly and appreciative of quality of life, we introduce the Rattlestick Foundation Series.

Each Foundation Series piece is proudly hand-crafted in our Canadian studio, located in the foothills of Southern Alberta.

Infused with both meaning and care, every tool we create is entirely unique.



## TABLE OF CONTENTS

The Protector	4
The Innovator	6
The Survivor	8
The Creator	10
The Rebel	12
The Traveller	14
Razor & Brush Stands	16
Apothecary	20
Razors	22
Packaging	24
<b>Product sheet</b>	<b>26</b>
Contact Information	27

Top Razor: Mixed media (Box Alder Burl and Resin) from Ramsey, Alberta with custom milled stainless steel hardware with Gillette Mach 3 Head piece and razor.

Bottom Razor: Steampunk (vintage watch pieces set in resin) with custom milled stainless steel hardware with the Gillette Fusion headpiece and razor.







for the

## PROTECTOR

Buck antler is a relic that embodies the spirit of the protector. White tail bucks live in small herds, foraging together at dawn and dusk. They never rest in the same spot twice, instead creating a new home together each night. They are each other's best protection, taking turns standing guard while the others forage. The crown of bone atop their heads is part weapon, part shield, but also a tool ensuring the formation of a strong lineage. Buck antler symbolizes the urge to watch over those in our care.



Brush: Buck antler (south western Alberta) and resin mixed media.  
Stand: Custom fit chrome





Brush: Live edge buck antler from south-western Alberta,  
silver-tip badger hair knot.

Razor: Live edge buck antler from north-west Alberta,  
custom milled stainless steel hardware, Gillette Fusion  
headpiece and razor



for the  
**INNOVATOR**

Adversity can destroy but it can also create. Like the pearl that forms from a grain of sand inside the shell of an oyster, a tree creates burls to protect itself from an irritant. Instead of growing in concentric circles, the grain of wood twists and curves finding a new way to be in the face of a problem. Burled wood symbolizes forging a new path in the face of adversity.



Brush: Ramsay box elder burl with abalone inlay, silvertip badger hair knot.

Razor: Maple burl with freshwater pearl inlay, custom milled stainless steel hardware, Gillette Fusion headpiece and razor





Brush: Ramsey box elder burl, silvertip badger hair knot.

Razor: Ramsey box elder burl from southern Alberta,  
Edwin Jagger head and tail pieces.





## for the SURVIVOR

There is always another way. The grooves, nicks and splinters that traverse this piece of buffalo horn are proof. The buffalo have thrived in the extreme conditions of the Great Plains, enduring sweltering summers and frigid winters. Buffalo are mostly blind, making their way in the world using an acute sense of smell and hearing. Once on the brink of extinction, their resilience has yet again restored them to their rightful place, free and roaming the Northern Plains of Alberta. Buffalo horn is a symbol of strength we don't yet know we have.



Razor: Buffalo horn and resin mixed media,  
German-made Merkur razor

Brush: Northern Alberta buffalo horn and resin mixed media, silvertip badger hair knot.

Razor: Buffalo and resin mixed media, custom milled stainless steel hardware, Gillette Mach 3 headpiece and razor





for the  
CREATOR

The world flows through all of us, both soulful and haunting like the call of the elk. As dusk approaches, and the cry expands across the plains of summer it is both beautiful and hideous; a mix of something so animal, and yet otherworldly. The male elk makes this call in mating season after which he sheds those long branches of bone in preparation for another year. Bull elk antler is a symbol of the creative force which moves through us all.

Brush: Elk antler from southern Alberta, silvertip badger

Razor: Elk antler from southern Alberta, custom milled stainless steel hardware, Gillette Fusion headpiece and blades







Brush: Elk antler from southern Alberta, silvertip badger

Razor: Elk antler from southern Alberta, custom milled stainless steel hardware, Gillette Fusion headpiece and blades



## for the REBEL

Like the world we inhabit we are both light and dark, good and bad, young and old. Steampunk is a visual expression of this truth. It is created using wheels, centerposts, and gears from antique watches. It is something old laid bare and made new again, symbolizing the dichotomy of our existence.

Left Razor: Steampunk vintage watch parts with rubies and garnets set in resin, custom milled stainless steel hardware, Gillette Mach3 headpiece and blades

Right Razor: Steampunk vintage watch parts with rubies and garnets set in resin, custom milled stainless steel hardware, Gillette Fusion headpiece and blades





Brush: Steampunk Vintage watch parts with rubies and garnets set in resin, silvertip badger hair knot.

Razor: Steampunk vintage watch parts with rubies and garnets set in resin, German-made Merkur slant razor head and tail pieces.





for the  
**TRAVELLER**

We carry our story with us wherever we go, but we also find new ways to understand it. These fragments of caribou antler have carried their story thousands of miles across the Northern woodlands of Alberta, travelling farther than any other land mammal. In the spring if you were to grasp a caribou by the antler, it would be warm, velvet covered and waxy. It is bone growing outside its body. Worn by both the male and female caribou, they shed and regrow their antlers each season. Caribou antlers are a symbol of the journey and its ability to reshape us.



Brush: Northern Alberta caribou antler; silvertip badger hair knot.

Razor: Northern Alberta caribou antler; German-made Merkur Razor head and tail pieces.

Brush: Northern Alberta caribou antler; silvertip badger hair knot.

Razor: Northern Alberta caribou antler; custom milled stainless steel hardware, Gillette Mach 3 headpiece and razor





## ARTIFACT STANDS

We know that shaving is a ritual which involves displaying, cleaning and cherishing the tools that you use. The level of detail and quality of every piece is unique and one of a kind. With proper care our pieces will last your lifetime and beyond. To maintain perfect performance we suggest the following:

Brushes should be hung brush side down to dry with the handle wiped free of excess moisture. Made from medical grade stainless steel, your razor should be wiped dry before storing.



Stand: Chrome plated cone stand with Rattlestick logo  
Mach 3 and Fusion razors



Stand: Turned center buffalo/  
inside buffalo set in fiery  
orange mixed media resin



Stand: Chrome plated cone stand  
with Rattlestick logo





## RAZORS

Our products are hand made using traditional techniques and quality products to give you the best grip, sharp shave, and smooth skin you want. We offer:

Edwin Jagger

Merkur Slant

Merkur Closed Comb

Rattlestick Fusion Stainless Steel

Rattlestick Mach 3 Stainless Steel





Buffalo mixed media resin Merkur Slant razor, kahki infused Ramsay burl Merkur Closed Comb, fresh water pearl inlaid Ramsay burl, Edwin Jagger razor, Mixed media resin with Ramsay burl, Rattlestick stainless steel Fusion razor, Rattlestick stainless steel steam punk Mach 3



**WE  
ARE  
ALL  
WILD.**

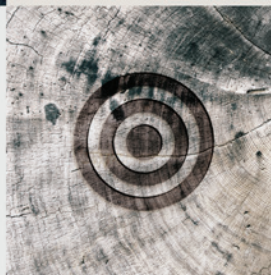
**UNCOMMON  
GROOMING  
PIECES FOR THE  
UNCOMMON MAN.**

Hand-made by craftspeople of Canada.



**VIEW OUR ARRAY  
OF PRODUCT.**

Hand-made by craftspeople of Canada.



**UNCOMMON  
GROOMING  
PIECES FOR THE  
UNCOMMON MAN.**

Hand-made by craftspeople of Canada.









## APOTHECARY

Our shaving products are handmade in small batches with all natural ingredients.

**raw** will awaken your wild senses. The sharp crisp top notes of grapefruit and lime combine to uplift your spirit, while grounding base notes keep you connected to the here and now

**untamed** this woody, worldly fragrance is reminiscent of your days of travel. Top notes of spruce and cypress combine with deep base notes of frankincense will remind you to get back to your untamed roots

**primal** this earthy mix of oakmoss and vetiver is unashamedly deep, with a strong base-note foundation. Reach down and connect with your very primal core

**barbarian** backroom lounges, the smell of whiskey mixed with the sweet smell of tobacco echoes through the middle notes of juniper, coffee and myrtle in this very urban fragrance. Engage your barbarian!



Brush: Ramsey burl with turquoise inlay, silver-tip badger hair knot.

Soap: **untamed** beer soap with Grizzly Paw Rutting Elk Red beer and all natural ingredients



Apothecary: Rattlestick **raw** fragrance line including shaving soap, beard balm, moustache wax, shaving cream, shaving tonic and packaging.





## PACKAGING

Using and repurposing raw materials is the core of our work.

Our craftsmanship processes, products and packaging are designed with creating minimum waste and a small footprint.



Packaging: Waxed canvas wrap with leather tie, bundled with Rattlestick envelope containing the story card, sealed with Rattlestick's wax seal



Tonic bottle paper tube, abalone inlaid silvertip brush,  
waxed canvas wrap, Edwin Jagger razor, fresh water pearl  
inlaid double edge razor





## PRODUCT SHEET



### Find Your Story

Innovator (burl, pg 7)  
Innovator (burl inlay, pg 6)  
Innovator (mixed media burl, pg 17)  
Traveller (caribou antler, pg 14-15)  
Protector (buck antler, pg 5)  
Protector (mixed media buck antler, pg 4)  
Survivor (mixed media buffalo, pg 8-9)  
Rebel (steampunk, pg 12-13)  
Creator (elk antler, pg 10-11)

### Match it to an Artifact

20.5mm silvertip badger inset brush  
Double edge Merkur slant razor  
Double edge Merkur closed comb razor  
Double edge Edwin Jagger closed comb razor  
Rattlestick stainless steel Mach 3 razor  
Rattlestick stainless steel Fusion razor

*All artifacts are available in every story / material*

### Rattlestick Apothecary

Beer Shaving Soap (4 oz)  
Shaving Cream (3 oz)  
After Shave Tonic (2 oz)  
Beard Balm (2 oz)  
Mustache Wax (1 oz)

#### Fragrances:

RAW - citrus  
BARBARIAN - urban  
UNTAMED - woodsy  
PRIMAL - earthy

### Foundation Series Stands

Single Cone stand  
(stainless steel)  
Turned stands  
(available in most materials,  
please inquire)



## CONTACT US

Rattlestick is accepting orders for both our Foundation Series of razors and brushes, as well as custom orders in a variety of materials, including warthog, mammoth tusk and others. Inquire about our shaving soaps, aftershave tonics and beard balms.

If you have a high-end retail store and feel that your clients would appreciate Rattlestick's craftsmanship and uniqueness, please fill contact us directly by phone or email.

+1 (587) 580-7618  
[theteam@rattlestick.ca](mailto:theteam@rattlestick.ca)





**[WWW.RATTLESTICK.CA](http://WWW.RATTLESTICK.CA)**

Updated Oct 2017